

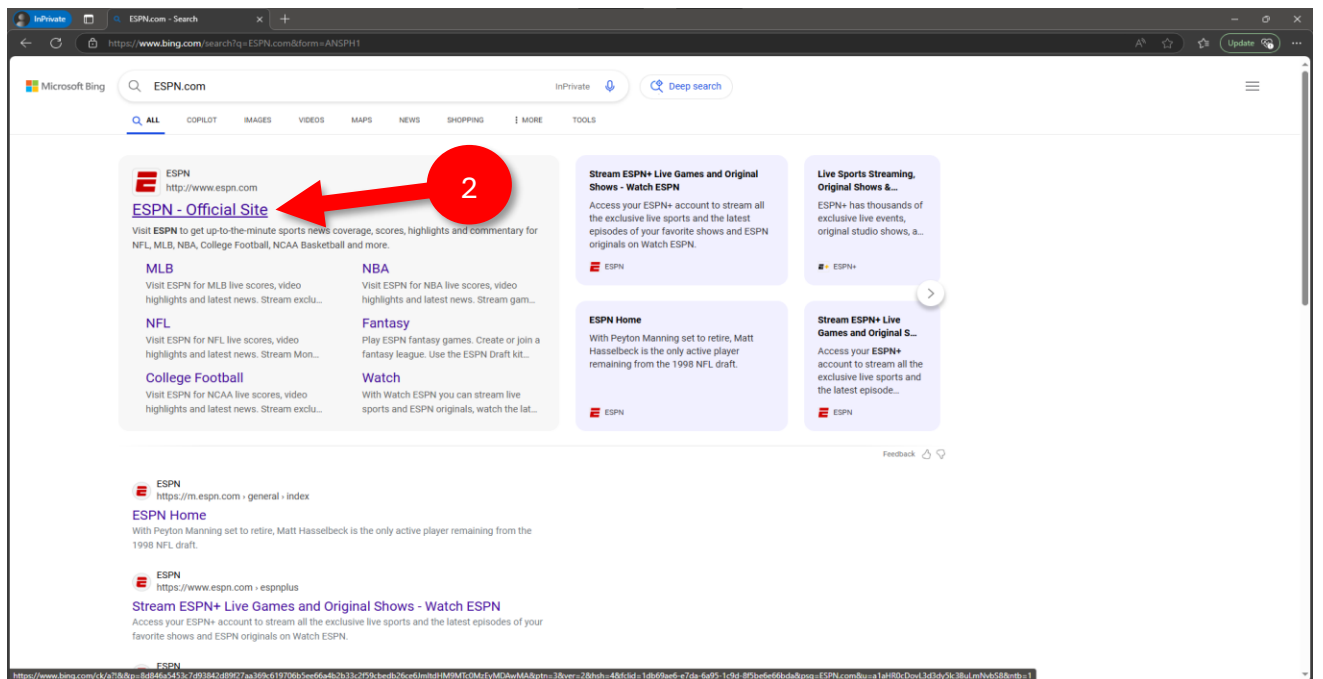
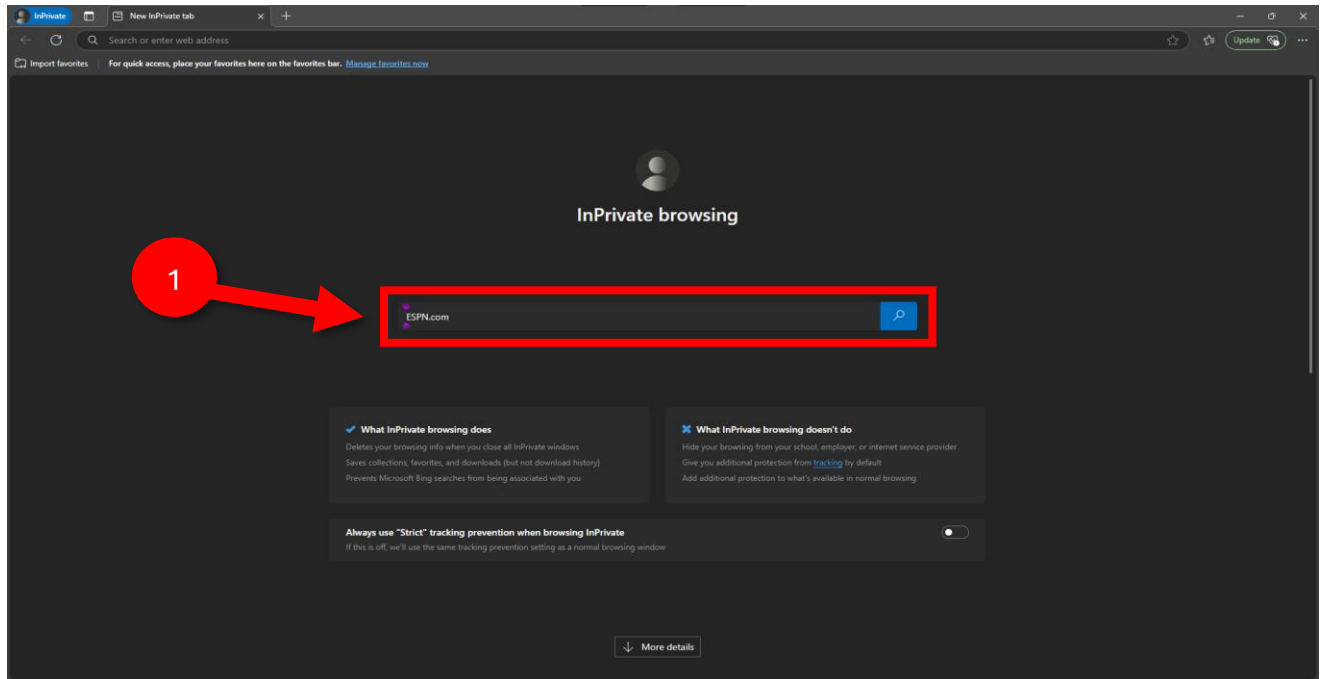
Visual Guide to Sign in with your Providers login on EPSN.

Table of Contents

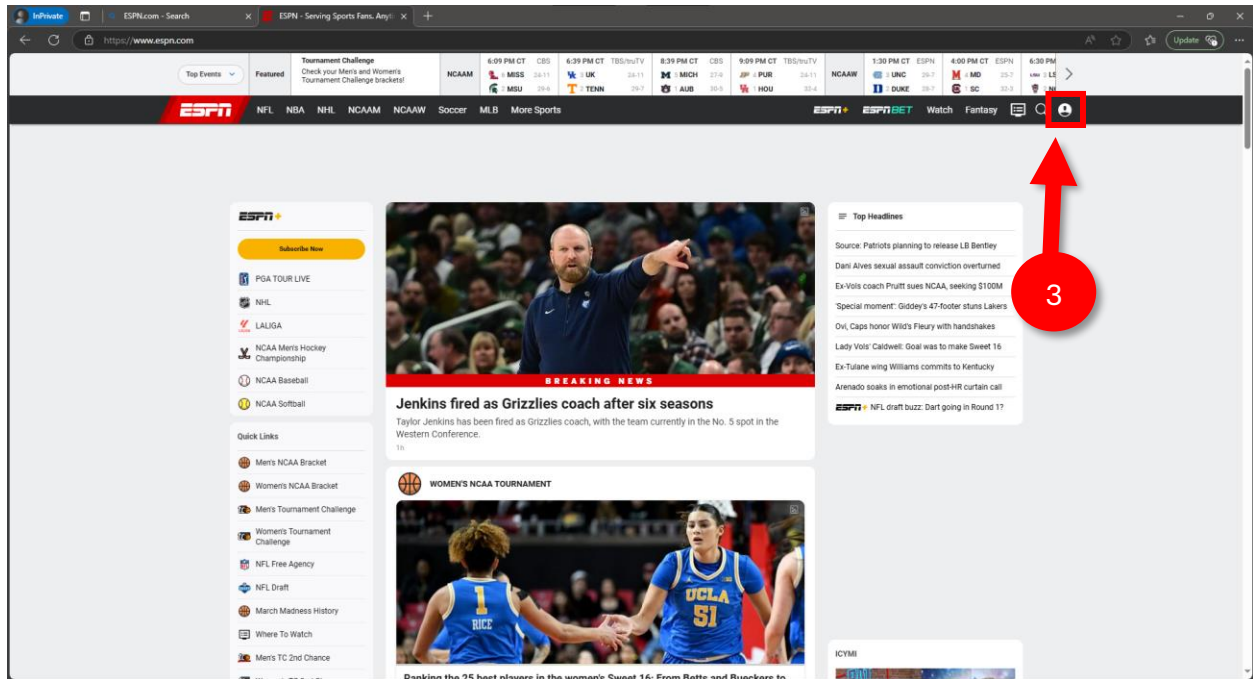
TV Provider sign in with web browser	Page 2
Mobile Device Provider sign in	Page 6
TV-Connected Device Provider Sign in	Page 14
Still need help? Contact us	Page 18

TV Provider sign in with web browser

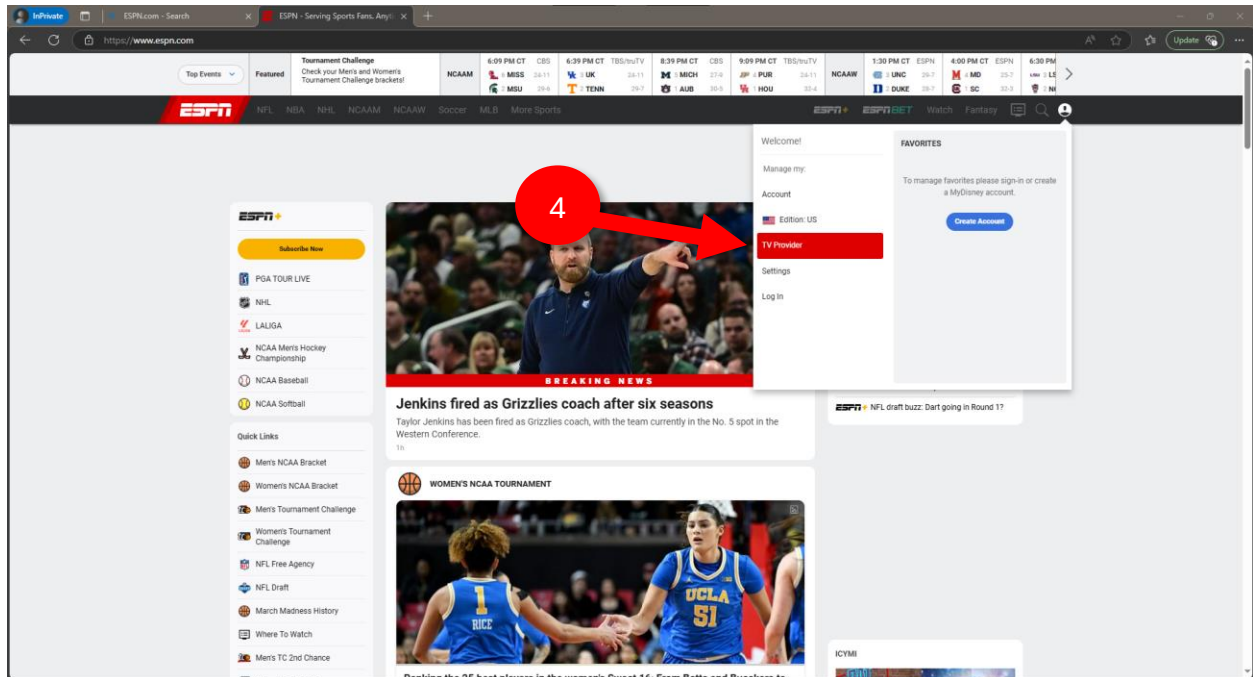
1. In your web browser, go to ESPN.com



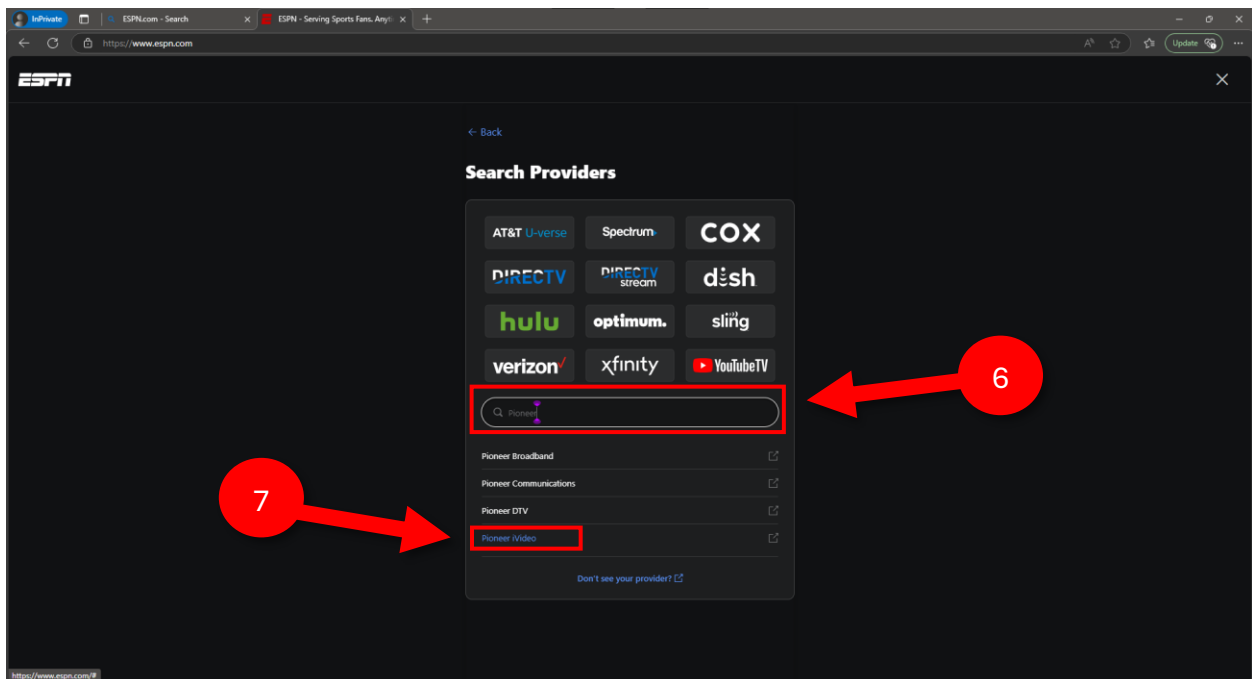
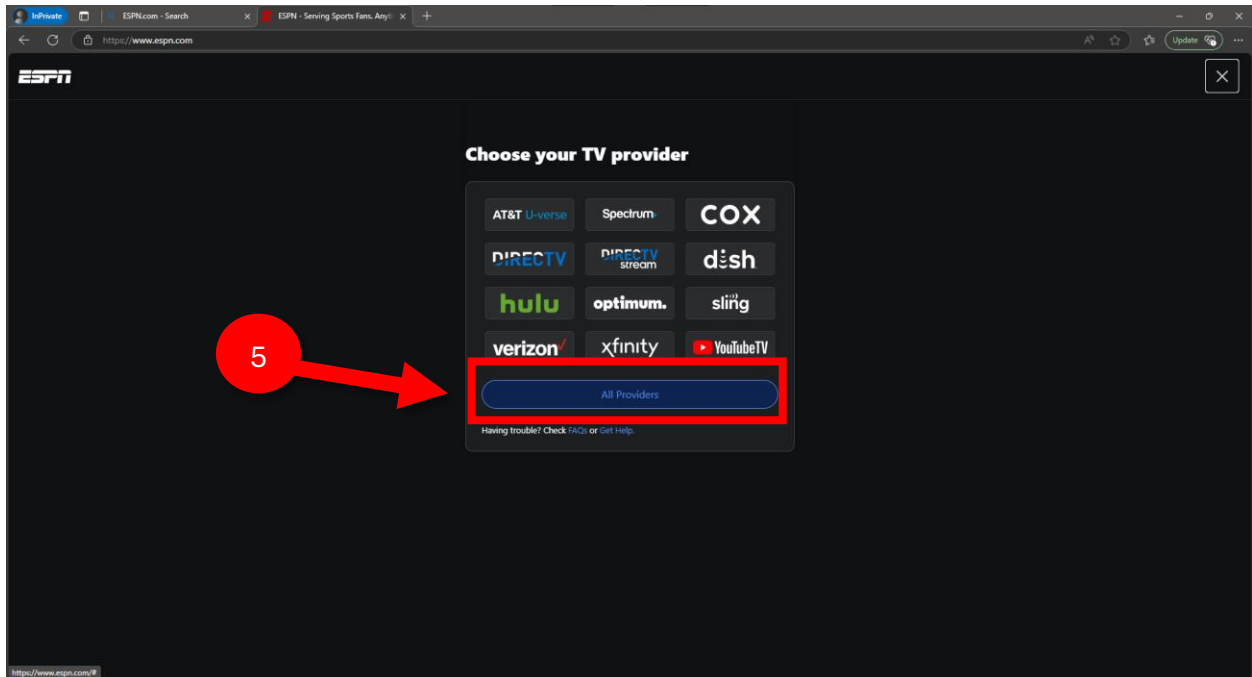
2. Click on the Account icon in the top right corner of your screen



3. Select TV Provider



4. Select your participating TV provider



5. Enter your TV provider login credentials and choose login.

The screenshot shows a web browser window displaying the Pioneer iVideo login page. The page has a white background with the Pioneer iVideo logo at the top center. Below the logo, it says "Please use your watchTVeverywhere.com account." There is a login form with two input fields: "Email:" and "Password:". A red box highlights these two fields, with a red arrow labeled "8" pointing to it from the right. Below the input fields is a "Login" button, with a red arrow labeled "9" pointing to it from the left. Below the "Login" button are two links: "New Users Register Here" and "Forgot Your Password". At the bottom of the page, there is copyright information: "©2025 Pioneer iVideo", "goipioneer.com", "800-375-8903", and "Privacy Policy", along with "version 10.0p".

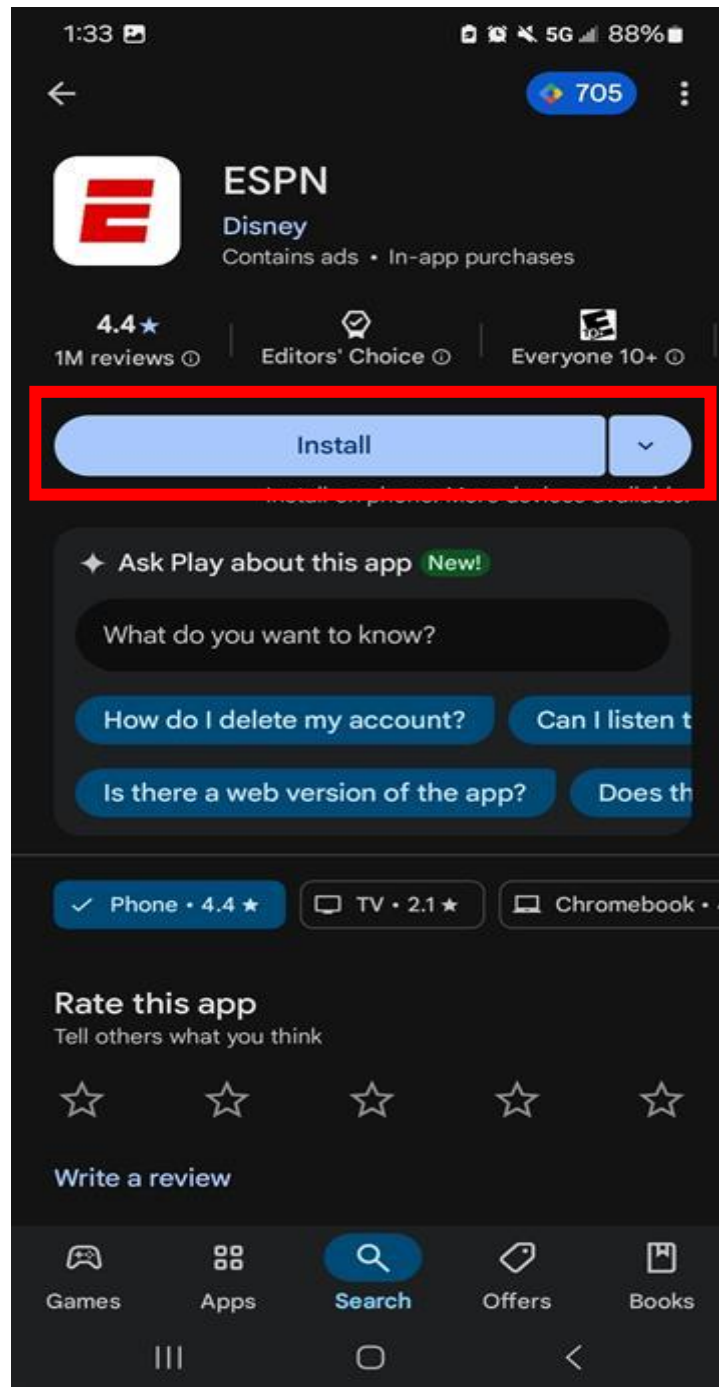
If you don't have a WTVE account(provider login), learn how to register here:

[WTVERegistrationDocument.pdf](#)

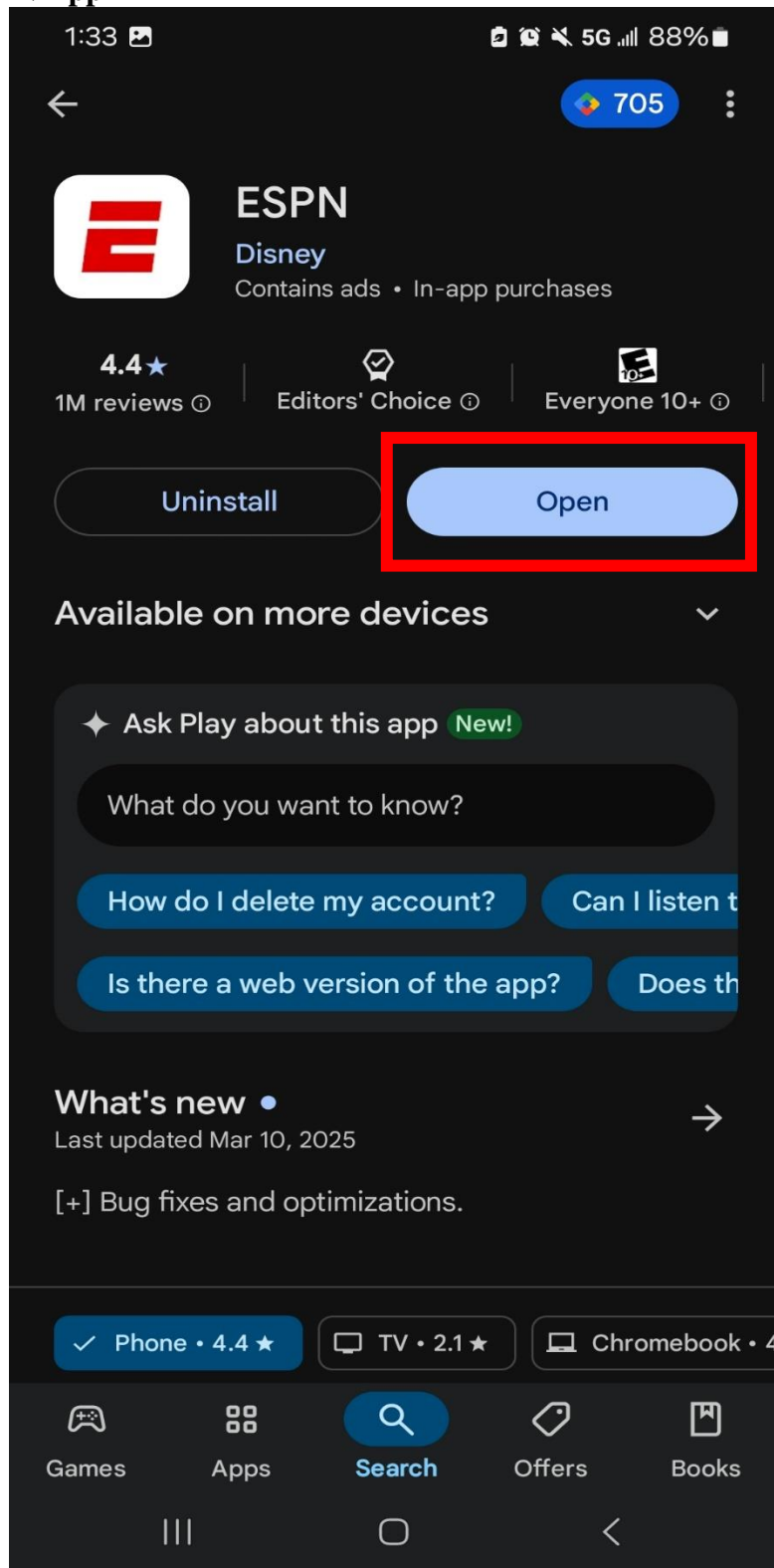
Mobile Device Provider Login

(The following is shown on an android phone but should be a similar process on apple.)

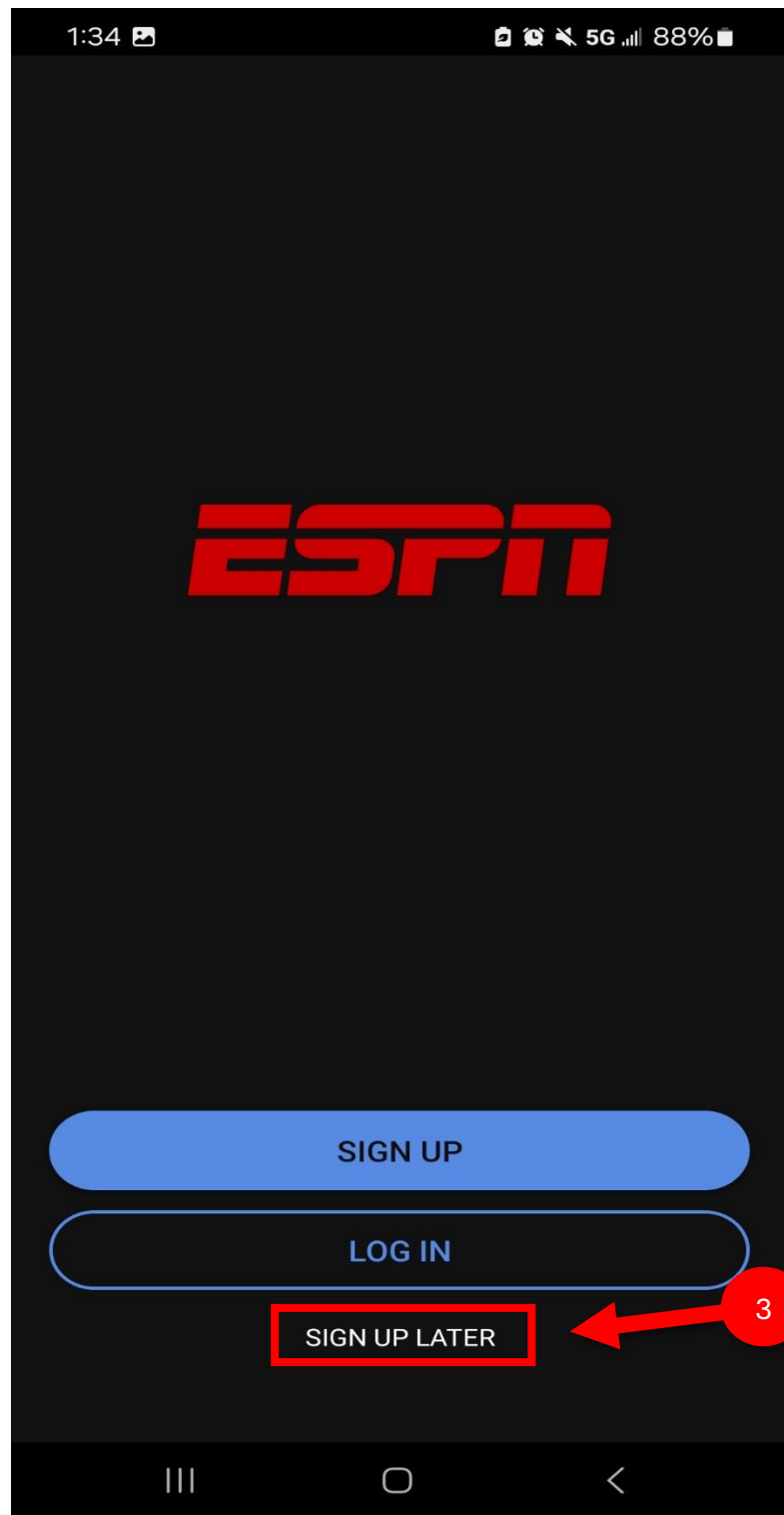
1. Download the ESPN app from your device's app Store

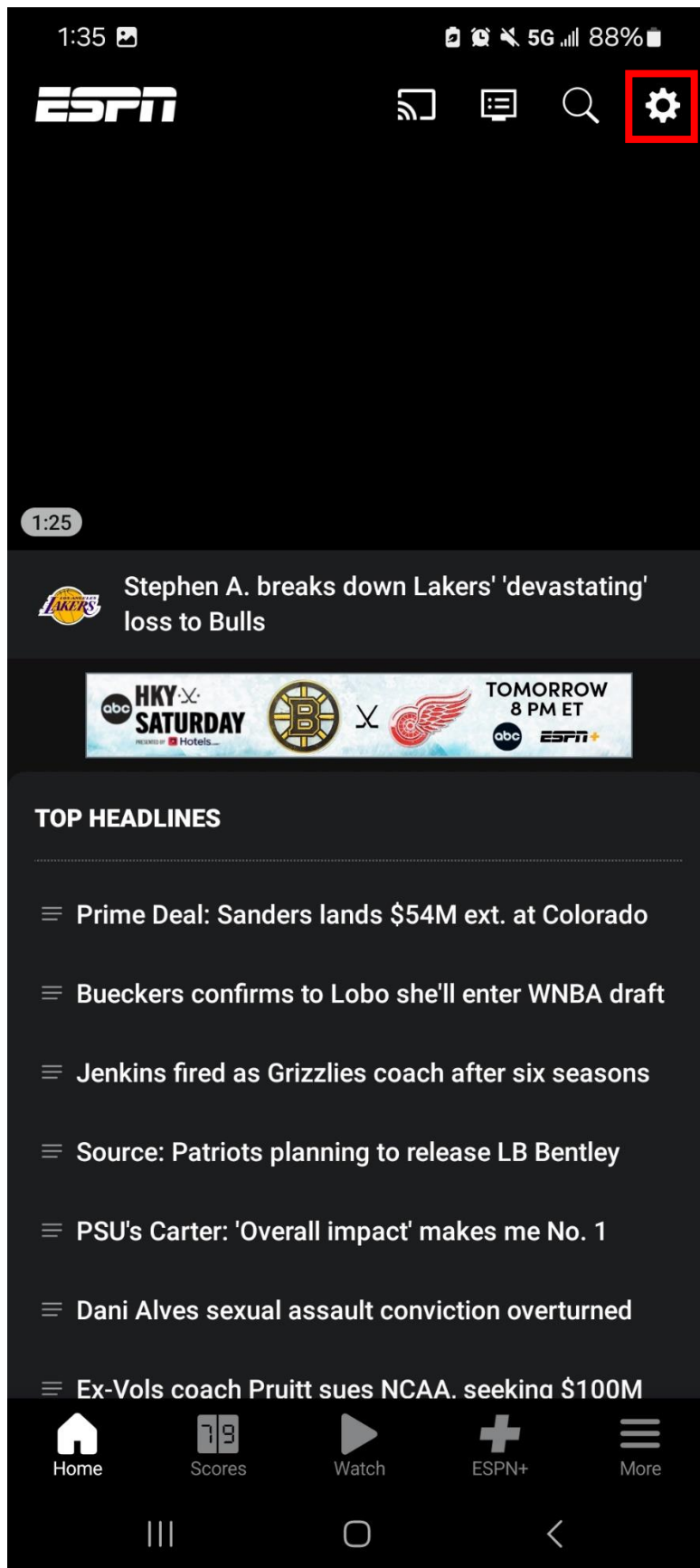


2. Open the ESPN App

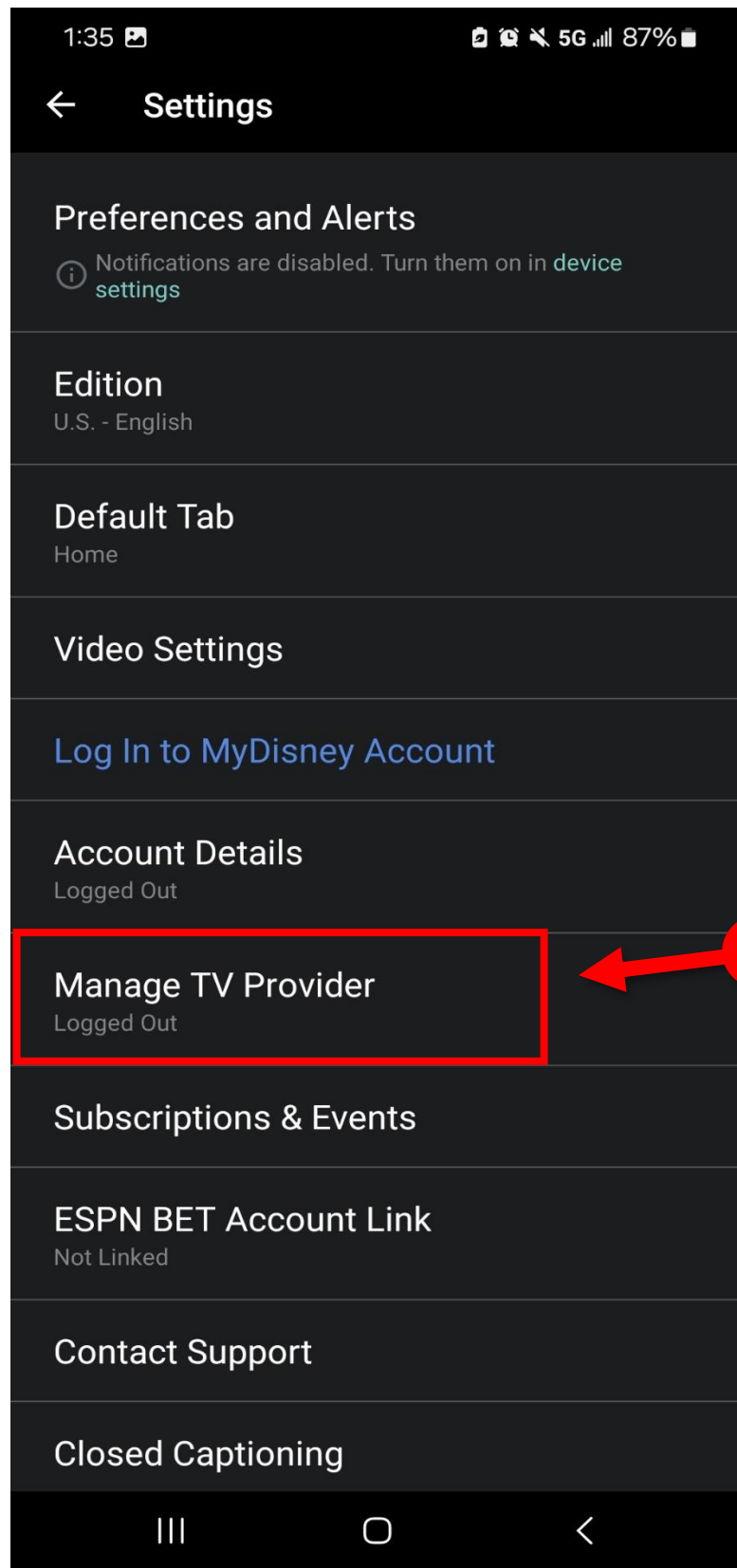


3. Tap the Sign up later then Settings icon in the top right corner of your screen

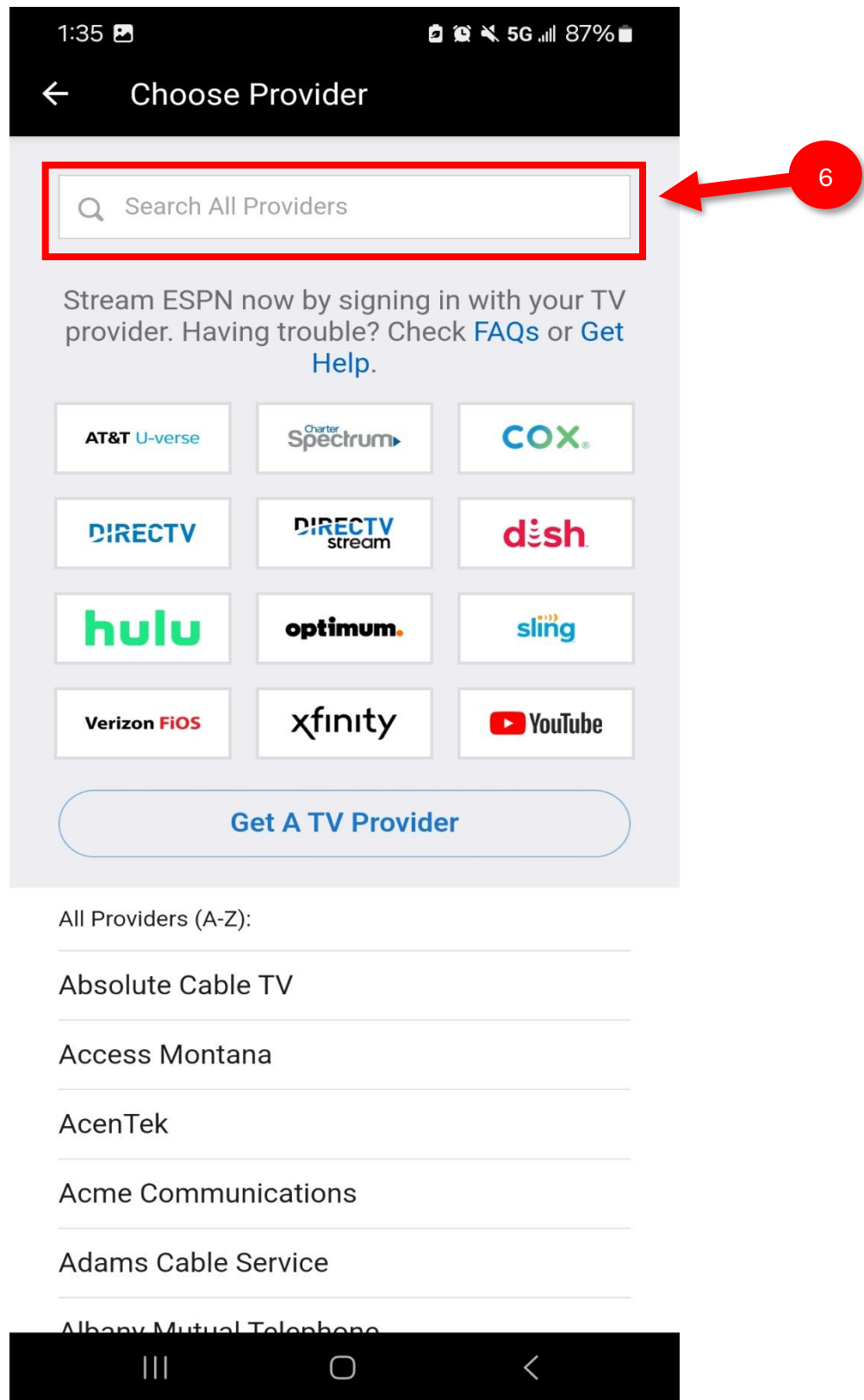


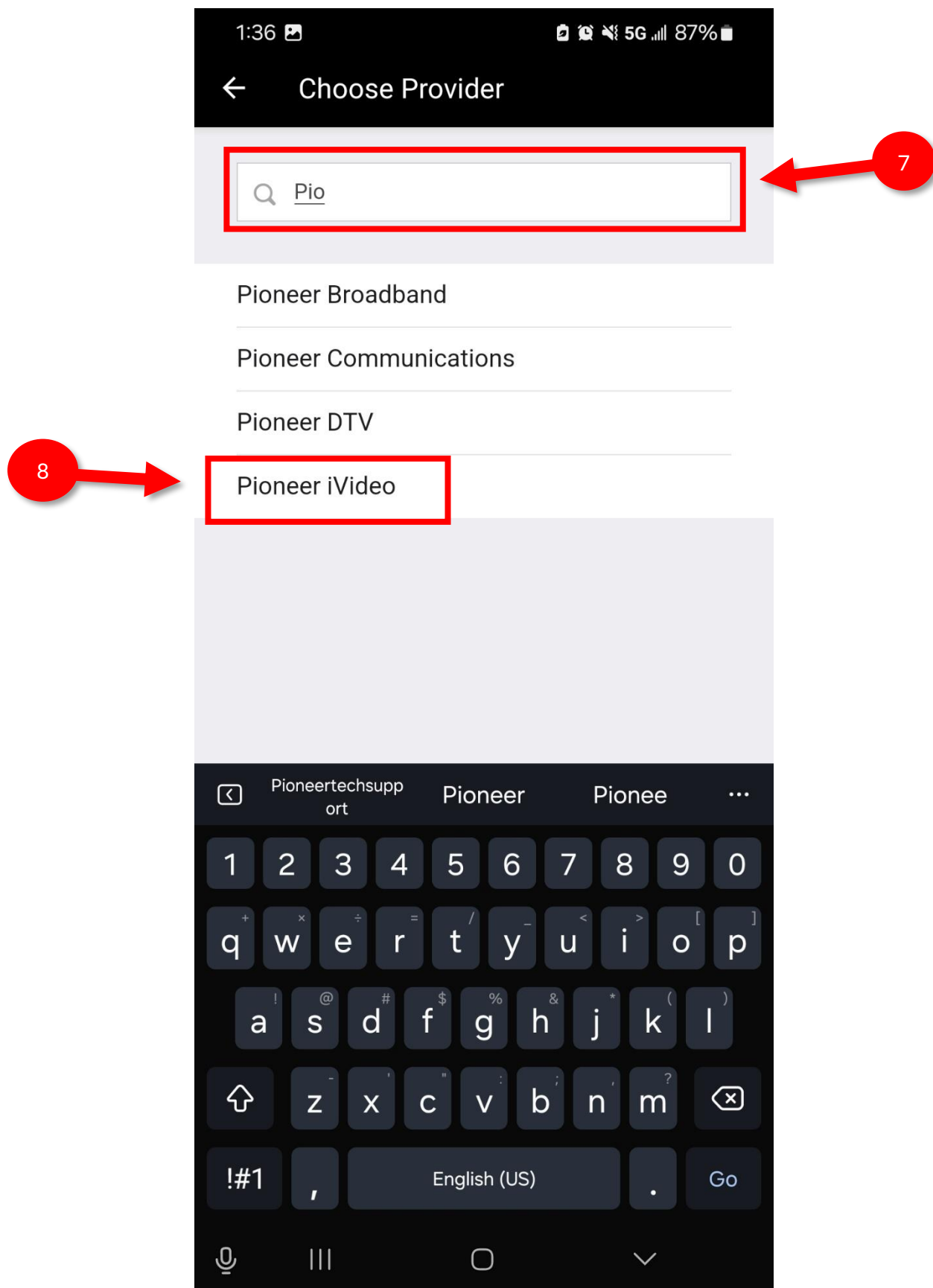


4. Select TV Provider

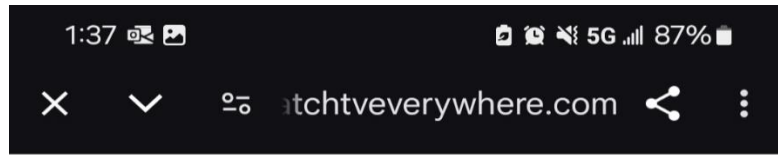


5. Select your participating TV provider (Search for Pioneer Ivideo)





6. Enter your TV provider login credentials and tap login.

A screenshot of the Pioneer iVideo login page. The page has a black header with the Pioneer iVideo logo. Below the logo, it says "Please use your watchTVeverywhere.com account." There is a red rectangular box around the "Email:" and "Password:" input fields. A red arrow labeled "9" points to this box. Below the input fields is a "Login" button. A red arrow labeled "10" points to the "Login" button. Below the button are links for "New Users Register Here" and "Forgot Your Password". At the bottom, there is copyright information: "©2025 Pioneer iVideo", a website link "gopioneer.com", a phone number "800-375-8903", and a "Privacy Policy" link. The version "version 10.0p" is also listed.

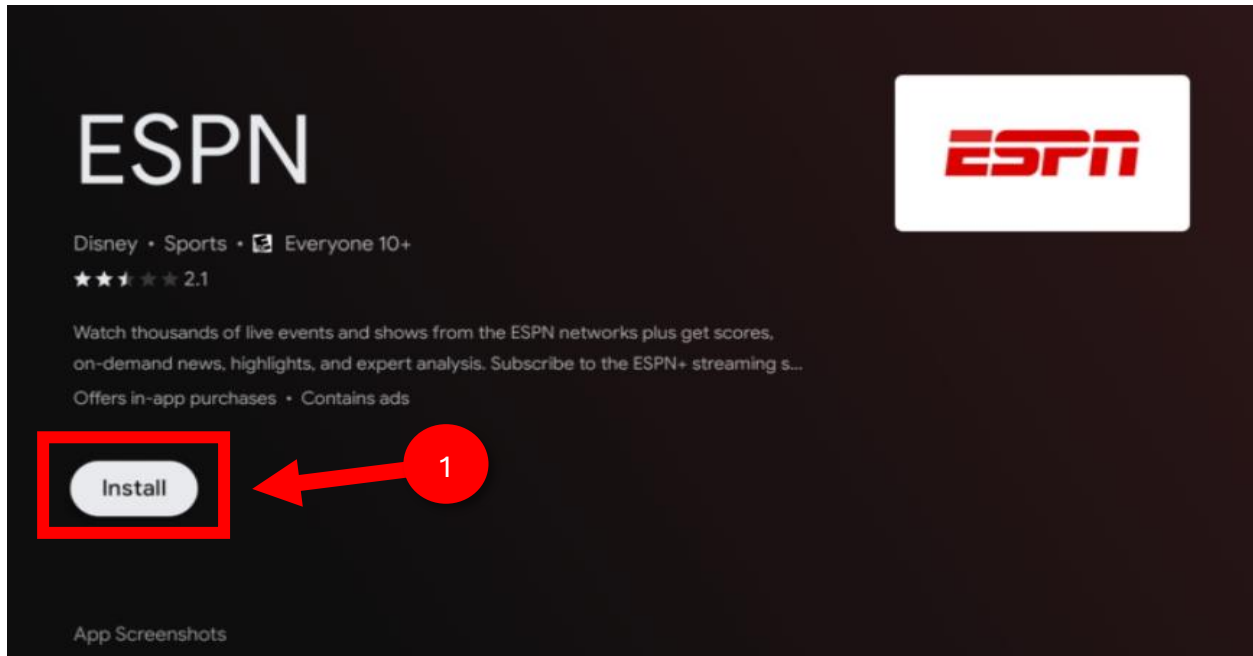
If you don't have a WTVE account(provider login), learn how to register here:

[WTVERegistrationDocument.pdf](#)

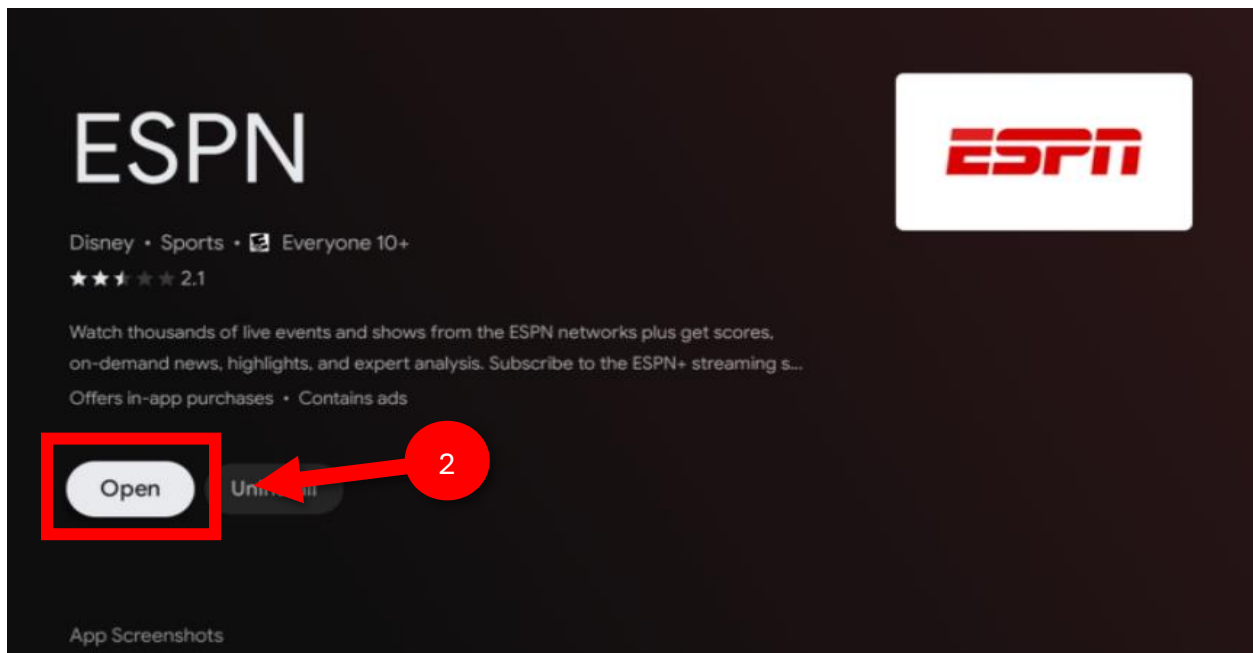
TV-Connected Device Provider login

(The Steps may appear to be slightly different depending on your device, but once you're in the ESPN app the process should be the same.)

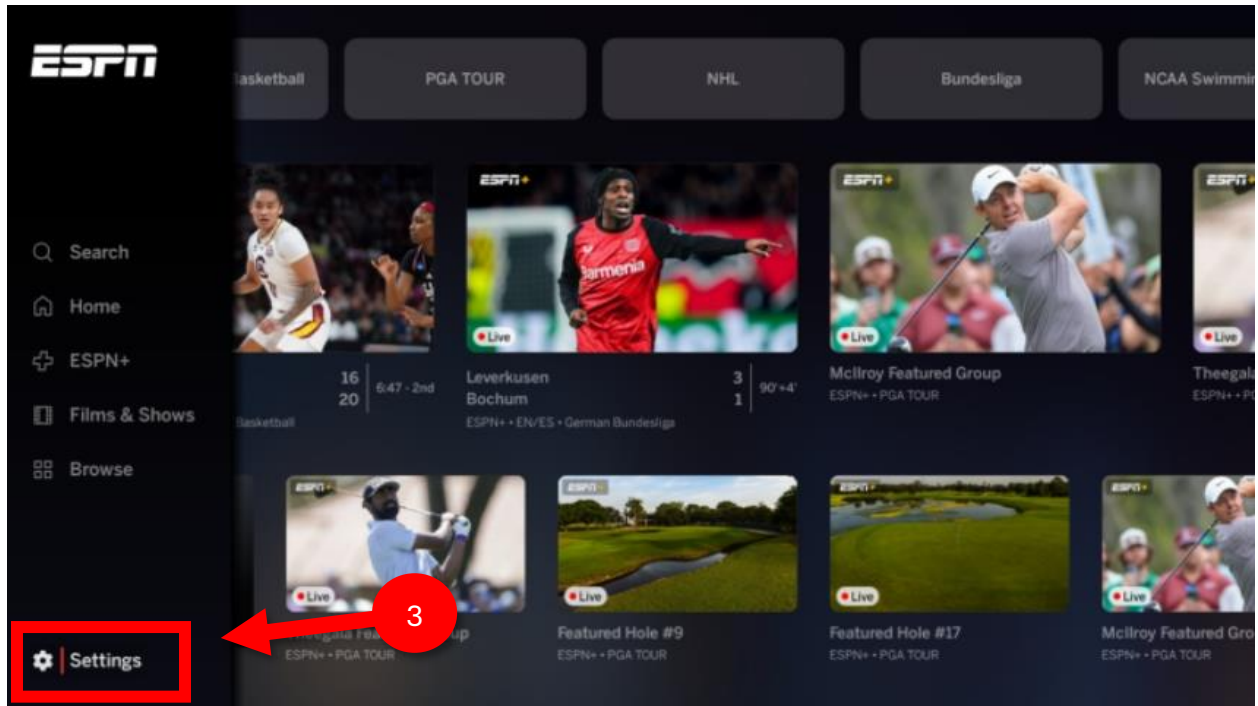
1. Download the ESPN app from your device's app store



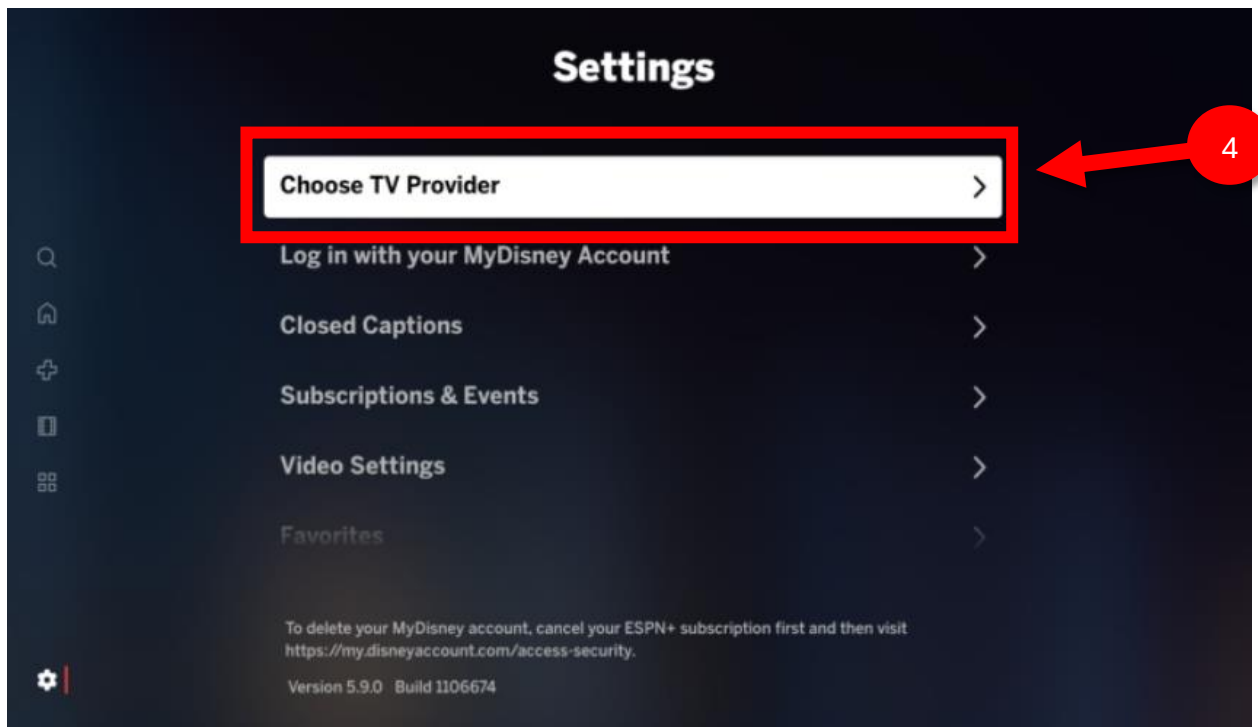
2. Open the ESPN app



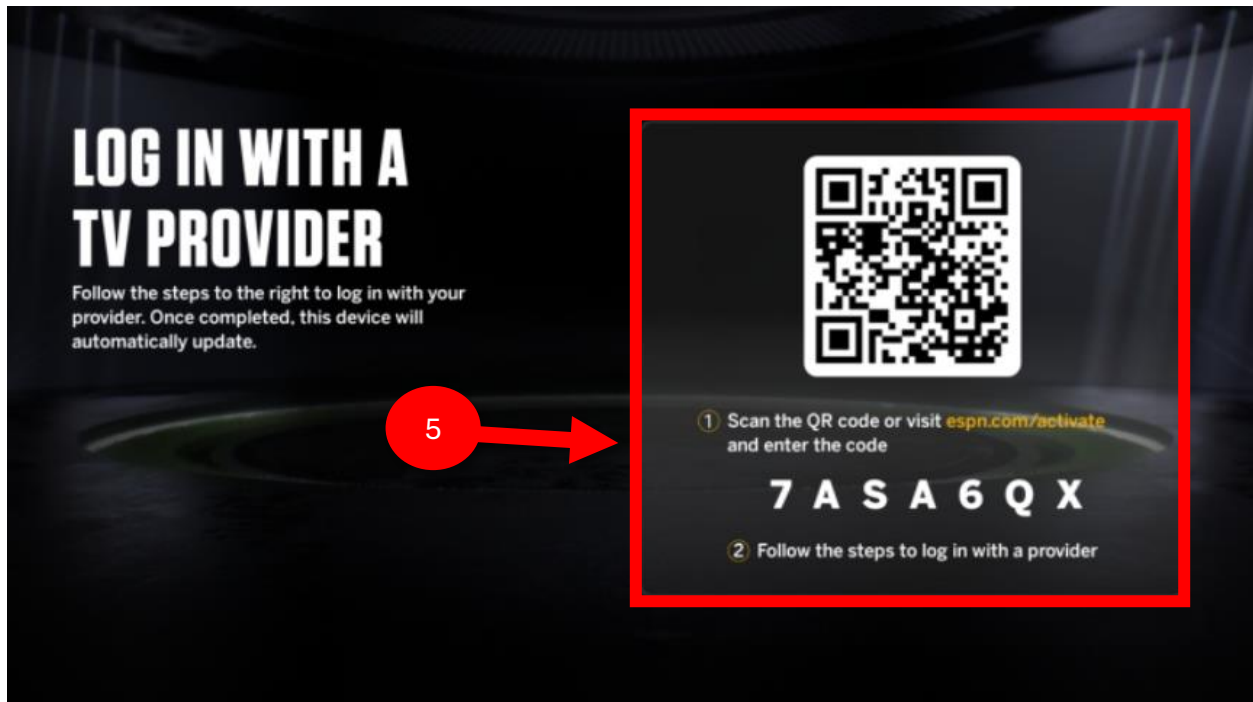
3. Select the Settings icon in the bottom left corner of your screen



4. Select Choose your Provider > Provider Account or TV Provider (depending on the device)



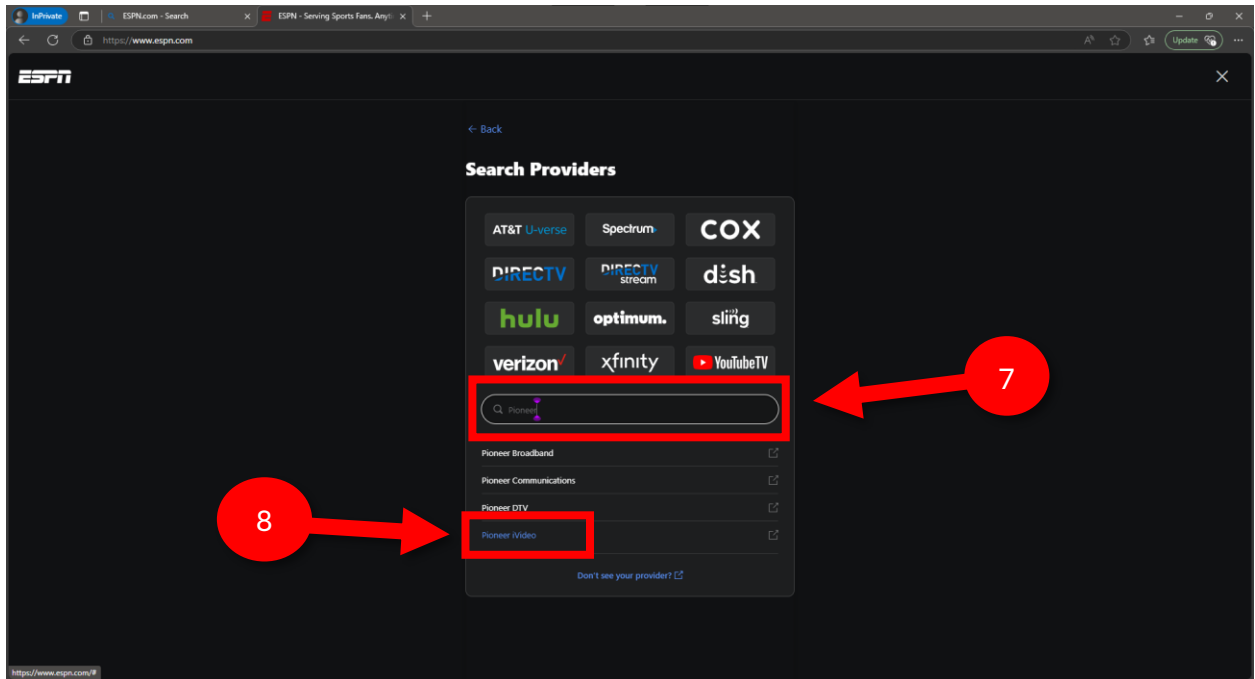
5. If your device directs you to navigate to a URL on your computer or mobile browser, please follow the on-screen instructions to complete the process



(Web Browser) Input Code shown on TV Screen.



6. Select your participating TV provider



7. Enter your TV provider login credentials and Login.



If you don't have a WTVE account(provider login), learn how to register here:

[WTVERegistrationDocument.pdf](#)

Still need help? Contact us.

If you require further assistance with signing into your provider login on the ESPN app, please don't hesitate to contact us using the details below:

Technical Support Chat:

<https://gopioneer.com/support>

Hours of Operation:

- Monday - Friday: 7:00 A.M. – 8:00 P.M.
- Saturday: 8:00 A.M. – 8:00 P.M.
- Sunday: Closed

Email Support:

techsupport@gopioneer.com

For immediate assistance, please call us at **1-888-782-2667**.